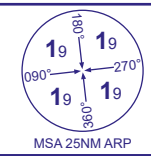


INSTRUMENT APPROACH CHART - ICAO

JERSEY RNP

RNP RWY 26

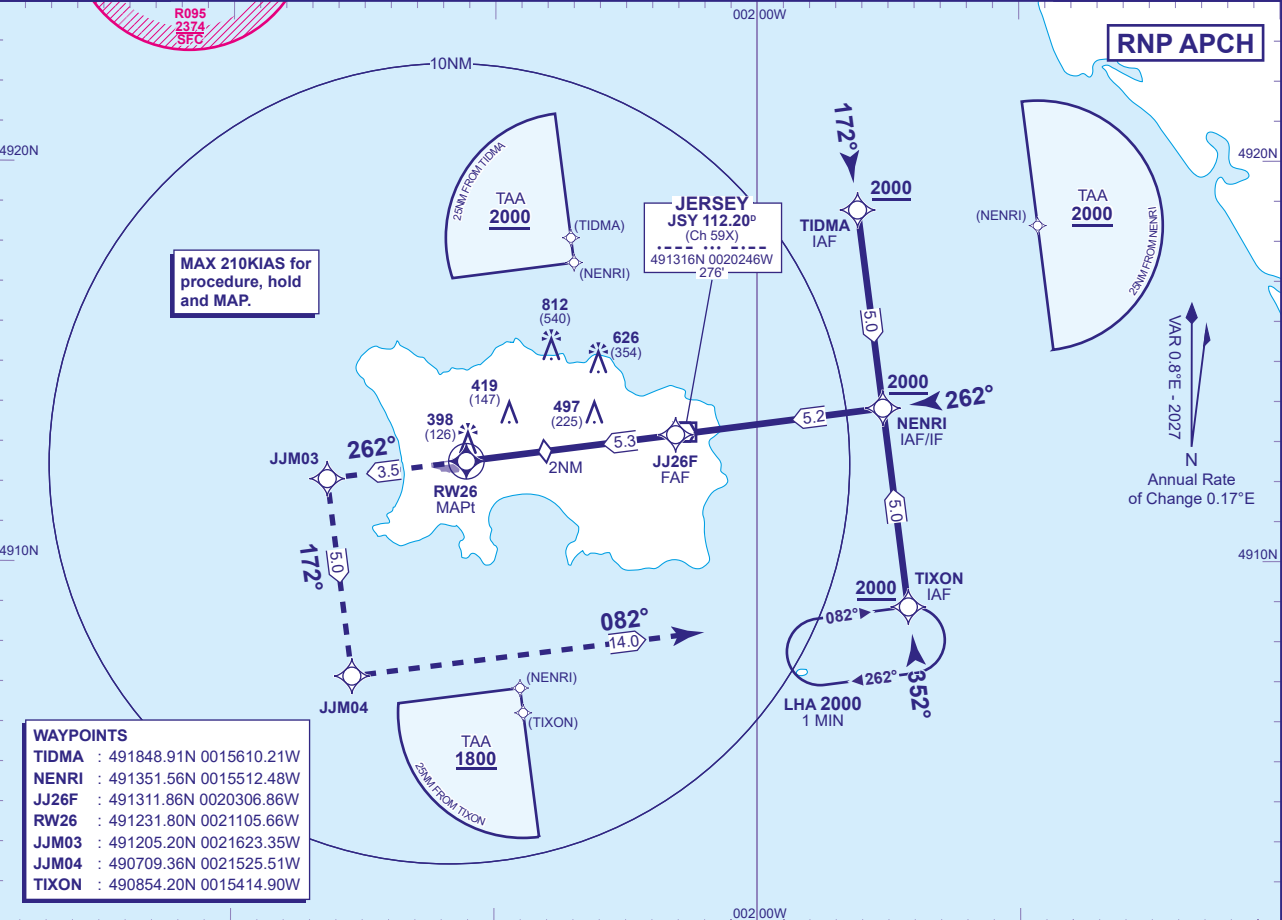
(ACFT CAT A,B,C,D)



ATC	125.205, 120.450	JERSEY CONTROL
APP	120.305, 118.555	JERSEY APPROACH
TWR	119.455	JERSEY TOWER
	121.905	JERSEY GROUND
ATIS	134.680	JERSEY INFORMATION

AD ELEVATION	277
THR ELEVATION	272
OBSTACLE ELEVATION	812 AMSL (540) (ABOVE THR)
BEARINGS ARE MAGNETIC	

EGNOS	CH 63839 E26A
MIN TEMP	-5°C
TRANSITION ALTITUDE	5000

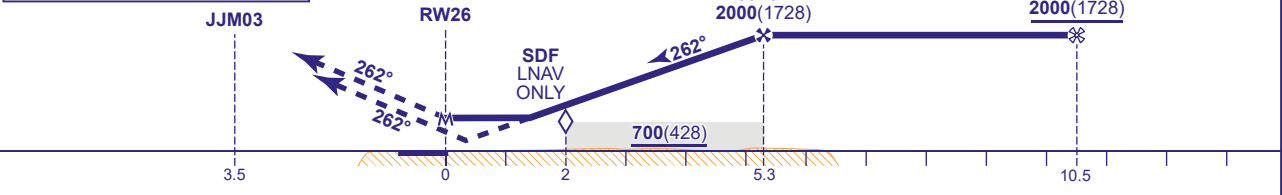


RECOMMENDED PROFILE LPV/VNAV Vertical Path Angle 3.0° (LNAV 5.24%), 320FT/NM

NM to RW26	5	4	3	2 (SDF)	1
ALT(HGT)	1910(1638)	1600(1328)	1280(1008)	960(688)	640(368)

MAPt (LNAV): RW26
Continuous climb to 3000. Initially climb straight ahead to JJM03 then turn left to JJM04 and TIXON to join the hold or as directed by ATC.

TCH 52



Aircraft Category		A	B	C	D	Rate of descent	G/S KT	160	140	120	100	80
OCA (OCH)	LPV	472(200)	472(200)	472(200)	472(200)		FT/MIN	850	740	640	530	430
	LNAV/VNAV	580(308)	580(308)	580(308)	580(308)							
	LNAV	652(380)	652(380)	652(380)	652(380)							
VM(C)OCA (OCH AAL)	Total Area	770(493)	770(493)	1210(933)	1210(933)							
	South of RWY 08/26	770(493)	770(493)	1030(753)	1030(753)							

NOTE Aircraft will normally be required to hold not lower than 3000.

CHANGE (13/25): MAG VAR UPDATED. MAG HEADINGS.